

FARONICS

ANTI-EXECUTABLE™

ABSOLUTE Protection from
Unauthorized Executables



Faronics Anti-Executable Enterprise and Updating Software Solutions

TECHNICAL WHITEPAPER

Last modified: June 1, 2005

Faronics

Toll Free Tel: 800-943-6422
Toll Free Fax: 800-943-6488
International Tel: +1 604-637-3333
International Fax: +1 604-637-8188

www.faronics.com

©1999-2006 Faronics Corporation. All rights reserved.
Deep Freeze, Anti-Executable, and WINSelect are trademarks
and/or registered trademarks of Faronics Corporation.
All other company and product names are trademarks of their respective owners.

Introduction

The process for updating any previously installed software solution on a workstation protected with Faronics Anti-Executable Enterprise involves using one of the two following methods:

1. Manually deactivating Anti-Executable: this method is recommended when no desktop management solution is in place. This can be done at the workstation and/or using the Enterprise Console.
2. Using the Anti-Executable Command Line Control (AEC.EXE) to deactivate Anti-Executable at the workstation. If a desktop management solution such as SMS, Zenworks, Alteris, BigFix etc. is in place, these solutions can be used with AEC.EXE.

This white paper provides technical information on using these methods to update any installed software solution.

Method # 1

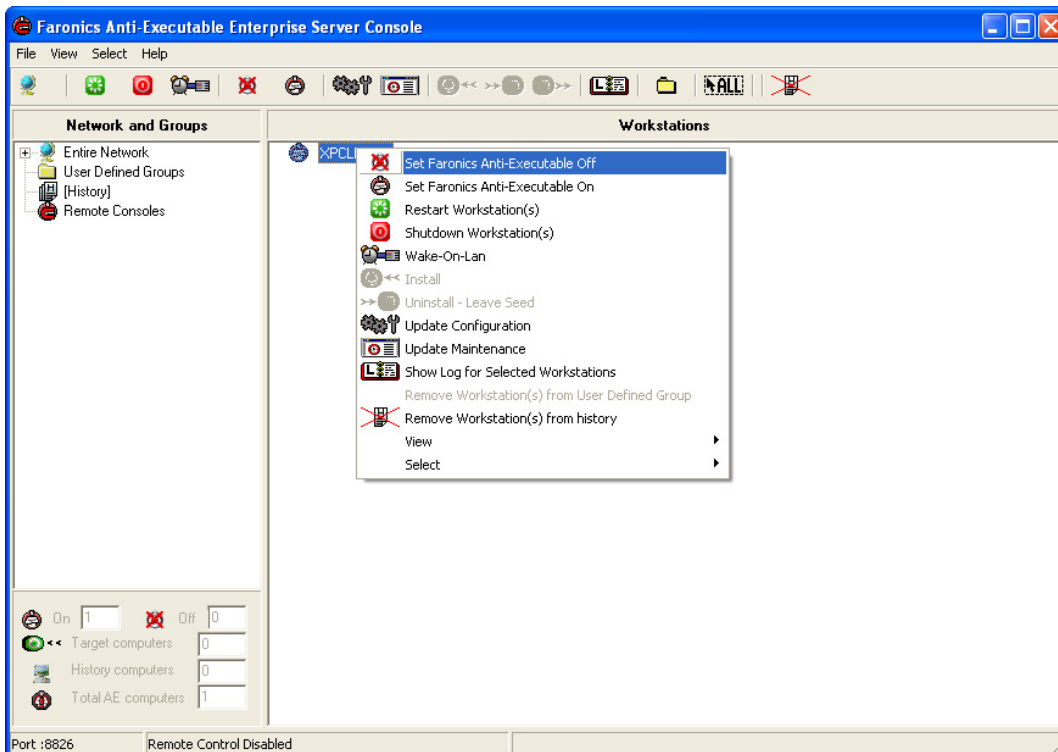
Prior to beginning an upgrade on any software solution such as an Antivirus solution, Word Processing program, Database Management System, and others, Anti-Executable must be deactivated.

With the Enterprise version of Anti-Executable, there are two ways to accomplish this.

1. Use the Enterprise Server Console to select and change the workstation protection.
2. Go directly to the workstation and deactivate Anti-Executable.

Deactivating Anti-Executable Using the Console

1. Select the workstation(s) to update within the Enterprise Server Console window.
2. Right-click the workstation(s) name and select *Set Faronics Anti-Executable Off* from the menu, as shown below:



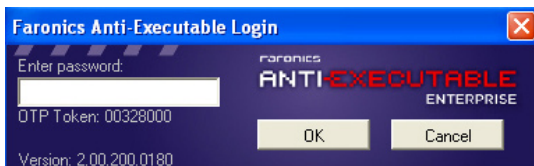
3. The Anti-Executable protection is now deactivated. Proceed with the software update.
4. Anti-Executable must be reactivated after the software update has been performed.

Deactivating Anti-Executable at the Workstation

1. At the workstation, press the SHIFT key and double-click the Anti-Executable icon in the System Tray.

Or, use the hot-key combination CTRL+SHIFT+ALT+F10.

The following *Login* screen appears:



2. Enter your password.

The following screen appears:



3. Select the *Off* radio button.
4. Click *Apply*, then click *OK*.

The Anti-Executable protection is now deactivated. Proceed with the software update.

5. Anti-Executable must be reactivated after the software update has been performed.

Method # 2

The Anti-Executable Command Line Control (AEC.EXE) offers network administrators increased flexibility in managing Anti-Executable installations. AEC works in combination with third-party enterprise management tools and/or central management solutions. This combination allows administrators to update workstations on the fly and on demand.

It is important to note that AEC is not a stand-alone application. AEC integrates seamlessly with any solutions that can run script files, including standard run-once login scripts.

The AEC executable is installed in the same directory as the Configuration Administrator:

C:\Program Files\Faronics\Faronics Anti-Executable Enterprise\AEC.exe

AEC commands require a password with command line rights. One Time Passwords (OTPs) cannot be used.

AEC has the following options:

Syntax	Description
AEC password ON	Turn Anti-Executable on
AEC password LOW	Set Anti-Executable security to Low*
AEC password HIGH	Set Anti-Executable security to High
AEC password OFF	Turn Anti-Executable off
AEC password CFG-[path] cfg.fzx	Replaces Anti-Executable configuration information. Works when Anti-Executable is On or Off*
AEC ISON	Queries workstation if Anti-Executable is ON. Returns 0 if Off. Returns 1 if On.

* The *Low* security level is not available on Win 9x/Me machines

Using a desktop management solution, use the following 3 AEC command line options:

AEC password ISON – queries the workstation status
 AEC password OFF – turns protection off
 AEC password ON – turns protection on

The following is an example of a script that can be modified for use with any desktop management solution:

```
@ECHO OFF
\\SERVER\SHARE\FOLDER\AEC.EXE password ISON
IF ERRORLEVEL 1 GOTO ON
IF ERRORLEVEL 0 GOTO OFF
ECHO Errors were encountered running the command line control on this workstation.
: ON
\\SERVER\SHARE\FOLDER\AEC.EXE password OFF
: OFF
REM *****
REM ***** Insert the command to update the Software Solution here. *****
REM *****
\\SERVER\SHARE\FOLDER\AEC.EXE password ON
:END
```