

FARONICS

ANTI-EXECUTABLE™

ABSOLUTE Protection from
Unauthorized Executables

Faronics Anti-Executable Enterprise and SMS Integration

TECHNICAL WHITEPAPER

Last modified: August, 2006

Faronics

Toll Free Tel: 800-943-6422

Toll Free Fax: 800-943-6488

International Tel: +1 604-637-3333

International Fax: +1 604-637-8188

www.faronics.com

©1999-2006 Faronics Corporation. All rights reserved.
Deep Freeze, Anti-Executable, and WINSelect are trademarks
and/or registered trademarks of Faronics Corporation.
All other company and product names are trademarks of their respective owners.



Introduction

This white paper explains how to integrate SMS with Anti-Executable; specifically, it details how to deploy a Anti-Executable installation file from the SMS Administrator Console.

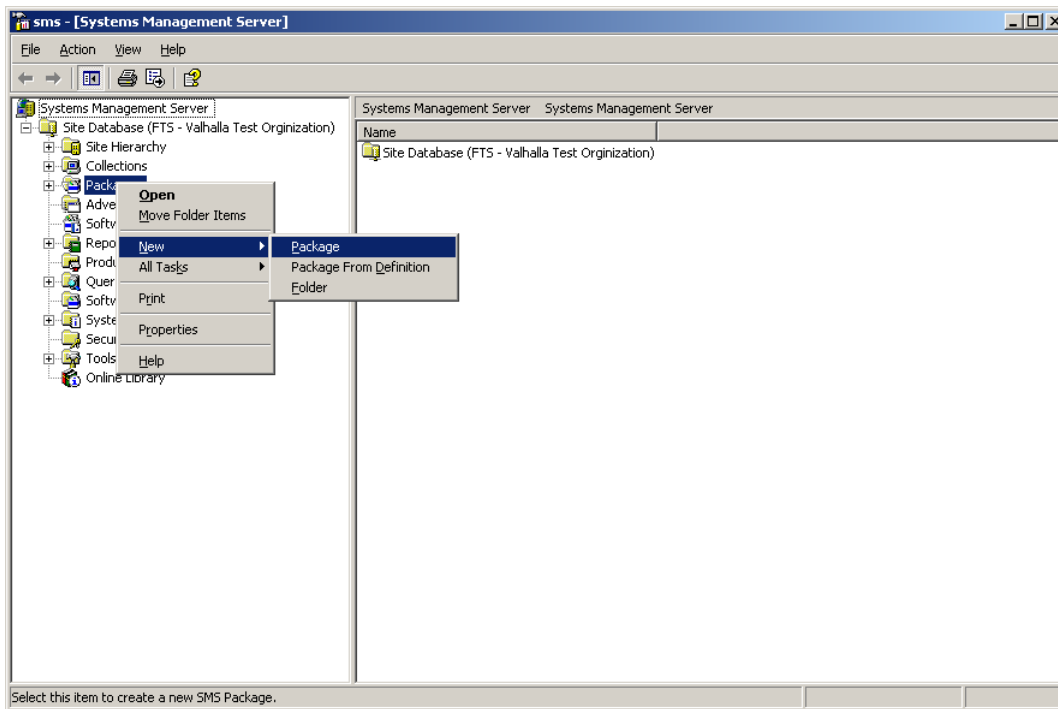
Requirements

Integration of these products requires a fully configured SMS server for software distribution and fully configured SMS Client machines.

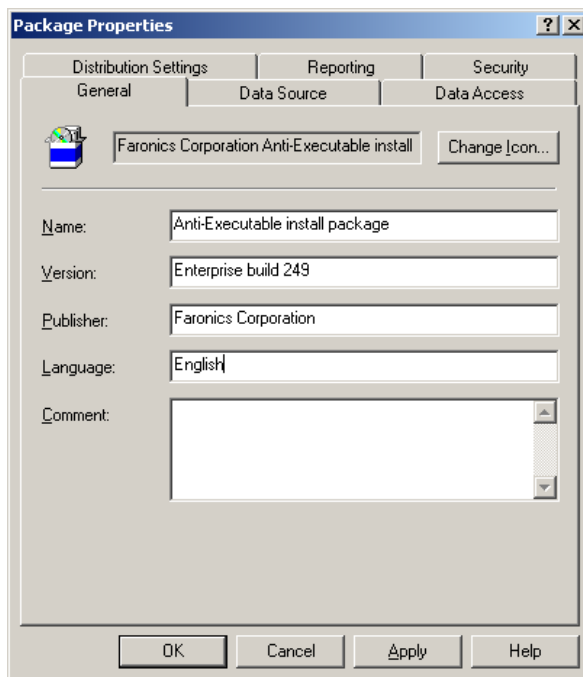
Creating a New Package

To create a new package in the SMS Administrator Console, complete the following steps:

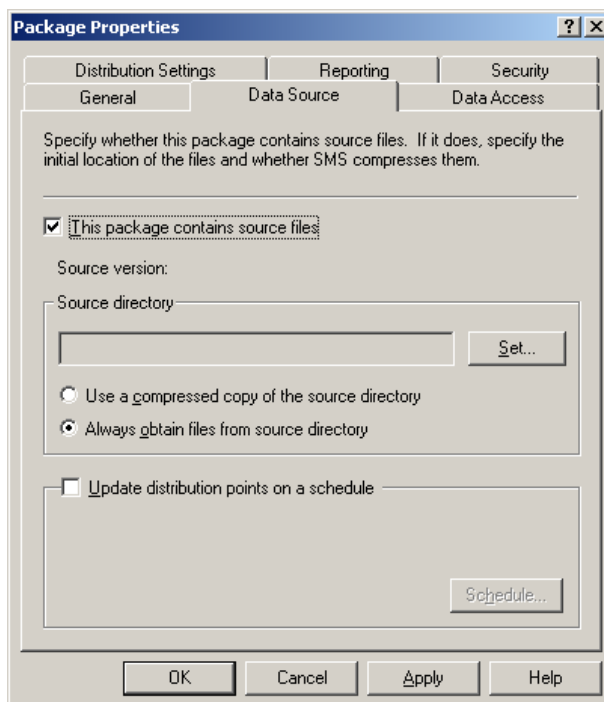
1. In the SMS Administrator Console, navigate to the *Packages* folder and right-click it.
2. From the contextual menu that appears, select *New > Package* as shown below.



The following screen appears:

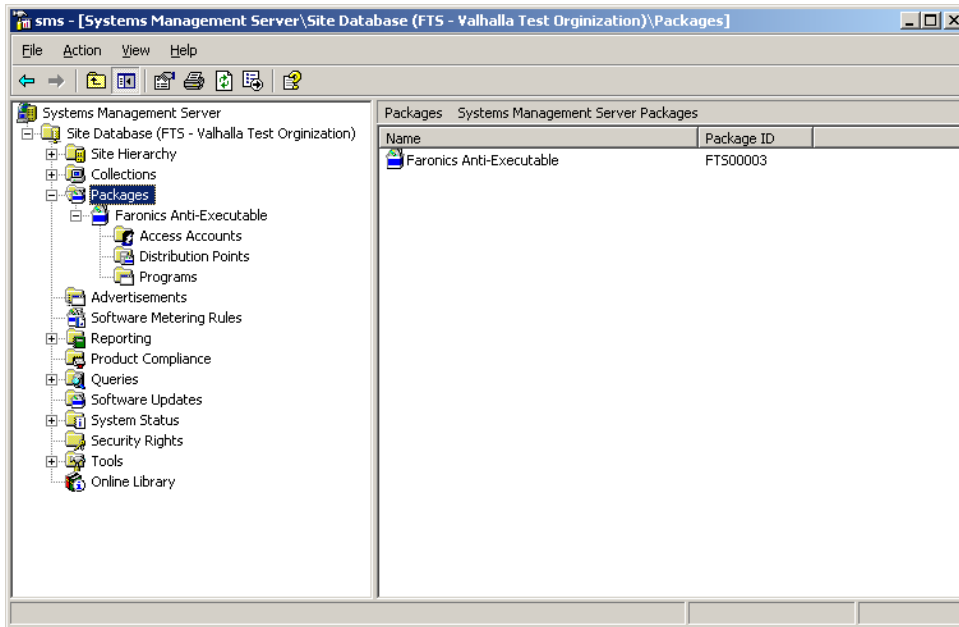


3. In the *General* tab of the *Package Properties* dialog, supply all necessary information.
4. Click the *Data Source* tab; the following screen appears:



5. Check the *This package contains source files* option. Click *Set...* in the *Source directory* field to browse to the source directory location.
6. Choose one of the two available options to use a compressed copy of the source directory or to always obtain files from the source directory, depending on where the files are located. All other settings can be left as default.

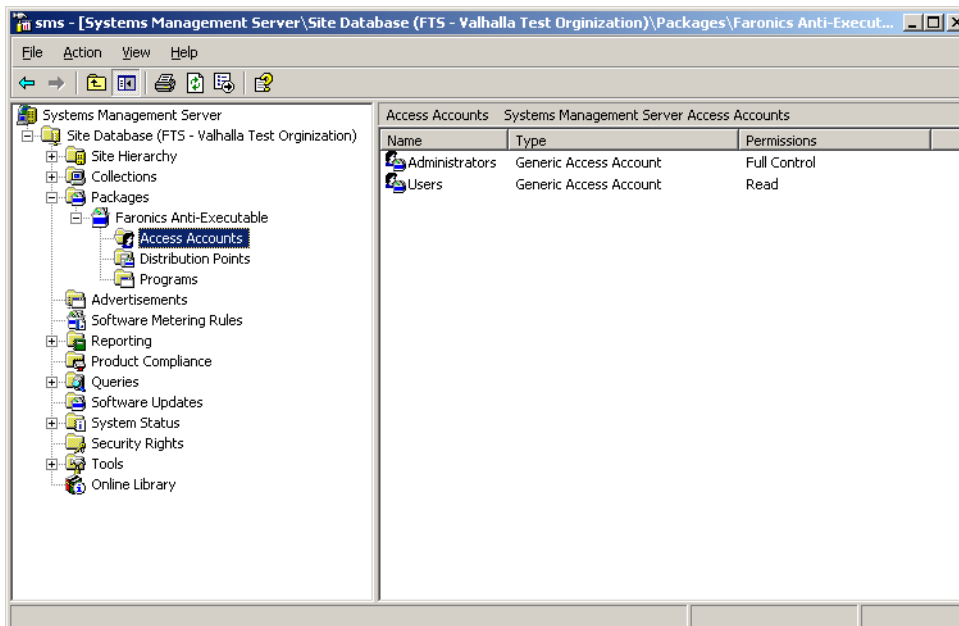
Once the package is created, it appears under the packages collection under the SMS Site database, as shown below:



Configuring the Package

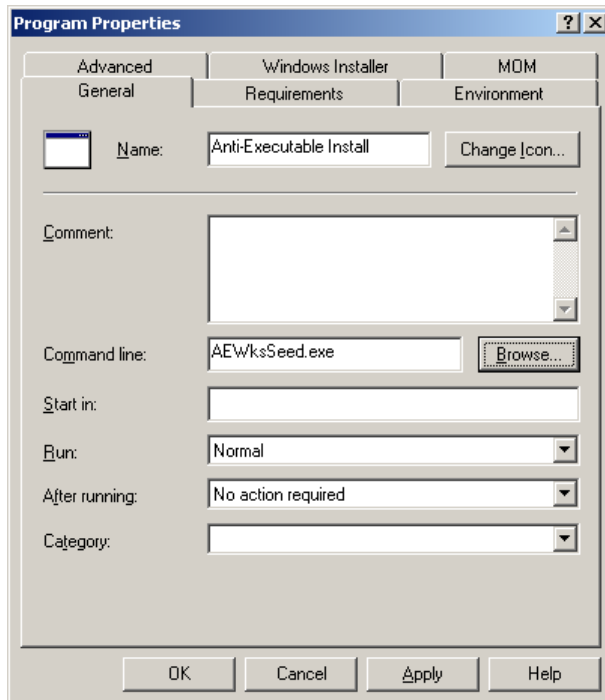
To configure the package, complete the following steps:

1. In the SMS Console, select the created package and double click on *Access Accounts*.
2. Give the appropriate permissions/ rights to the users that will be installing this package.
Leave the *Distribution Points* at the default setting.



- Expand the *Programs* menu and select *new* to open the program properties.

The following screen appears:

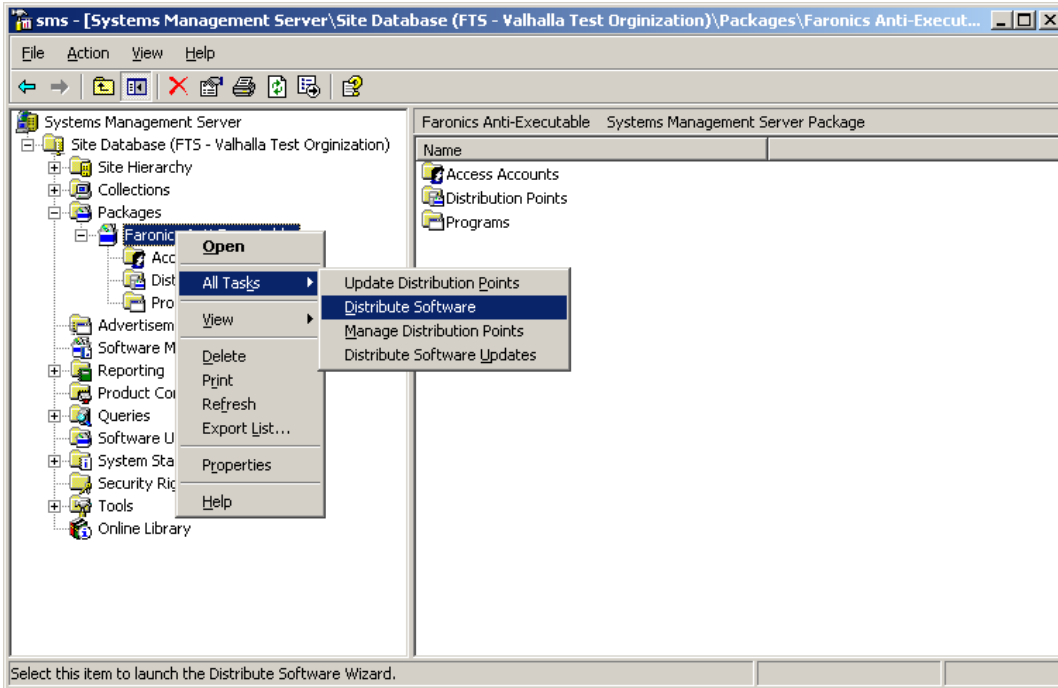


- In the *Name* field, enter a descriptive name for the program.
- In the *Command line* field, click *Browse* and select the location of the executable install file.
In this example, the *AEWksSeed.exe* file is used; the *AEWks.exe* file can also be used.
- Other settings can be left at their default values.
Click *Apply*, followed by *OK* to complete the creation of the program.

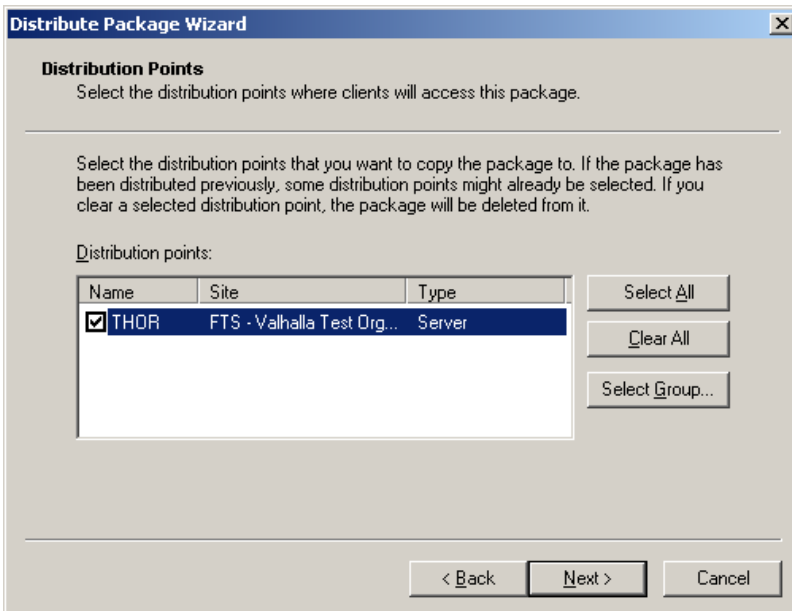
Distributing the Package

To distribute an Anti-Executable installation file through the SMS Console, complete the following steps:

1. Select the preferred package, right-click and *All Tasks > Distribute Software*.

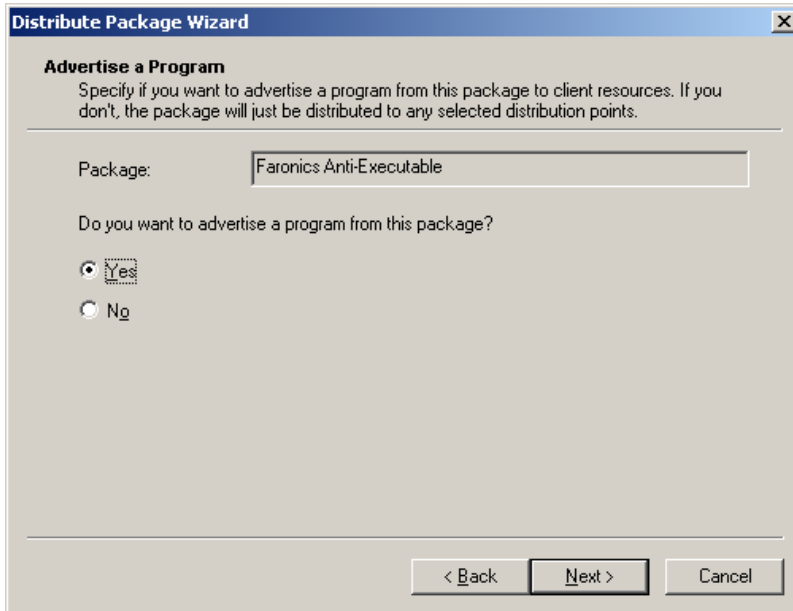


2. The first screen of the *Distribute Package Wizard* appears. Click *Next*. The following screen appears:



3. Select the *Distribution points*. In this case, the package resides on the local drive of the server.

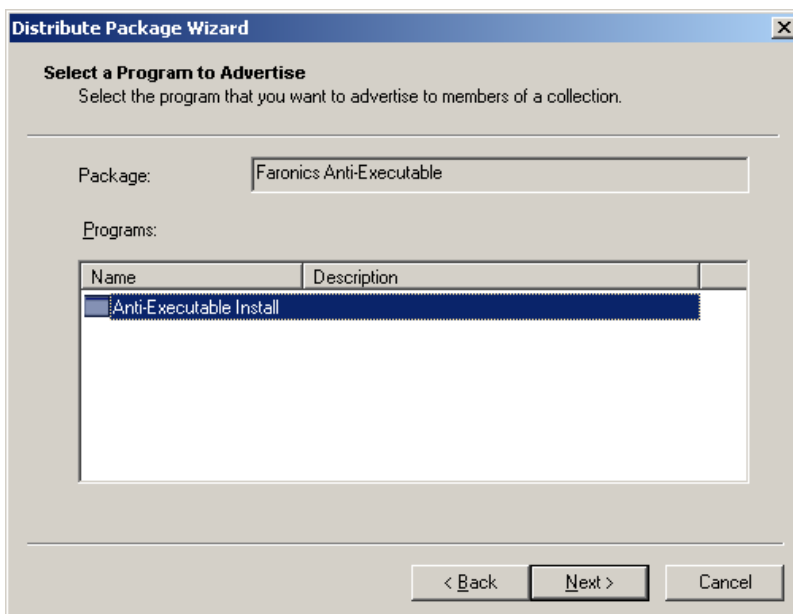
Click *Next*. The following screen appears:



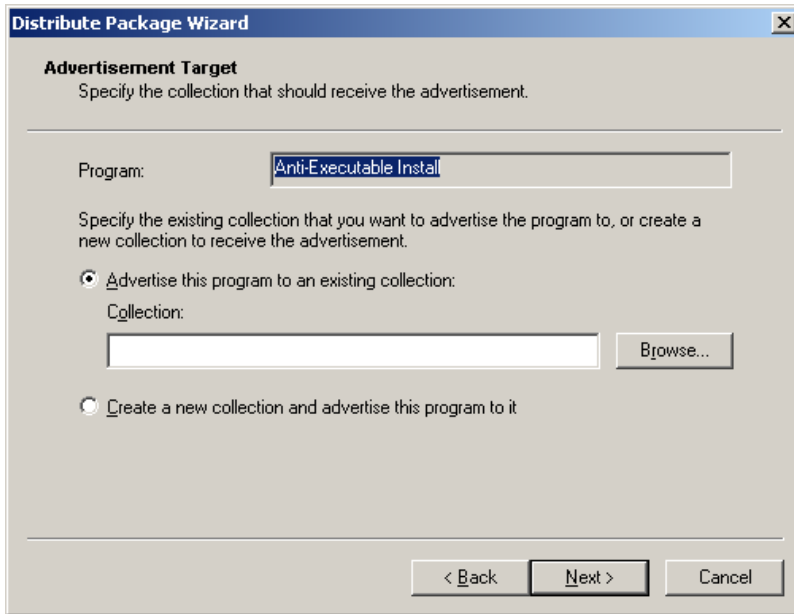
4. This screen presents the option of advertising the program for later installation/distribution. The client will pick up the advertised program depending on the advertising settings.

Select *Yes* to advertise the package, and click *Next*.

The following screen appears:

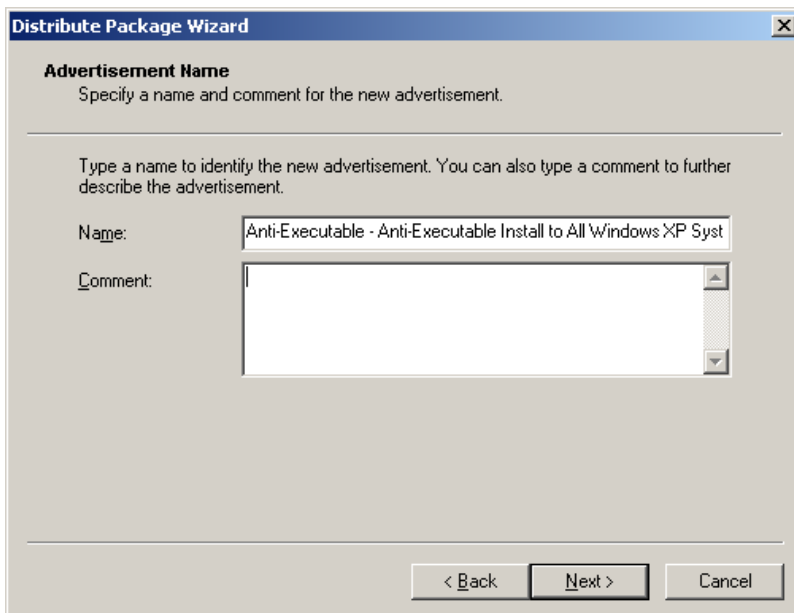


5. Select the preferred install package in the *Package* field.
Click *Next*. The following screen appears:



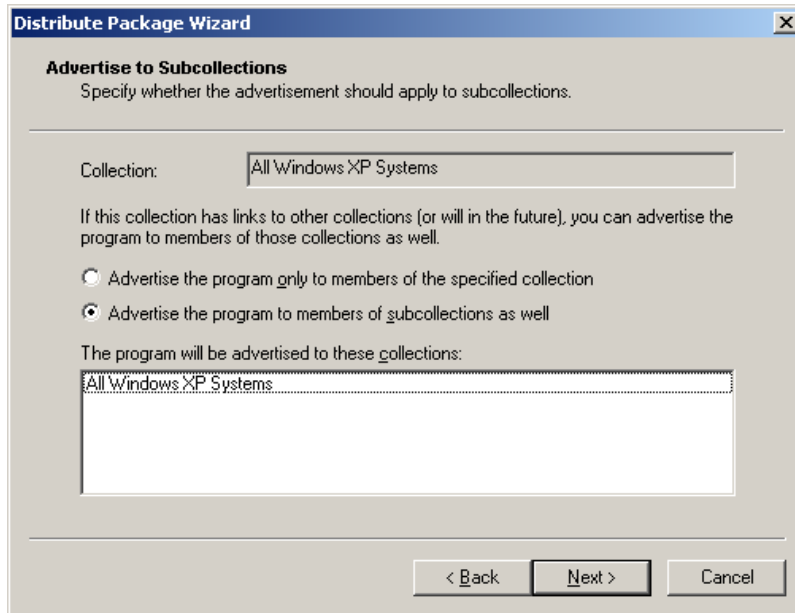
The screenshot shows the 'Distribute Package Wizard' dialog box with the 'Advertisement Target' step selected. The title bar reads 'Distribute Package Wizard'. Below the title bar, the text 'Advertisement Target' is followed by the instruction 'Specify the collection that should receive the advertisement.' A text box labeled 'Program:' contains the text 'Anti-Executable Instal'. Below this, the text 'Specify the existing collection that you want to advertise the program to, or create a new collection to receive the advertisement.' is displayed. There are two radio button options: the first is 'Advertise this program to an existing collection:' which is selected, and the second is 'Create a new collection and advertise this program to it'. Under the first option, there is a text box labeled 'Collection:' and a 'Browse...' button. At the bottom of the dialog, there are three buttons: '< Back', 'Next >', and 'Cancel'.

6. Choose the *Collection* the program will be advertised on; click *Browse...* to locate the collections in the menu.
Click *Next*. The following screen appears:



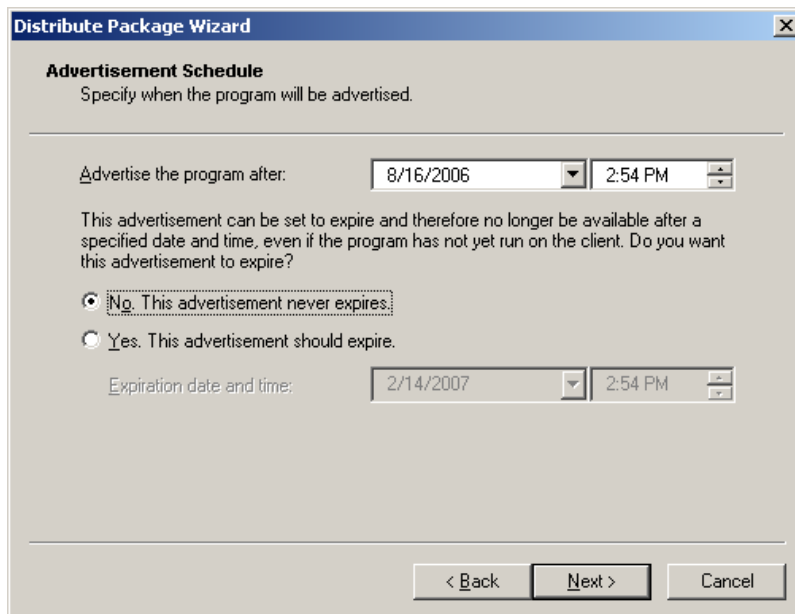
The screenshot shows the 'Distribute Package Wizard' dialog box with the 'Advertisement Name' step selected. The title bar reads 'Distribute Package Wizard'. Below the title bar, the text 'Advertisement Name' is followed by the instruction 'Specify a name and comment for the new advertisement.' Below this, the text 'Type a name to identify the new advertisement. You can also type a comment to further describe the advertisement.' is displayed. There are two text boxes: one labeled 'Name:' containing the text 'Anti-Executable - Anti-Executable Install to All Windows XP Syst' and one labeled 'Comment:' which is empty. At the bottom of the dialog, there are three buttons: '< Back', 'Next >', and 'Cancel'.

7. In the *Name* field, enter the name of the new advertisement.
Click *Next*. The following screen appears:



8. Choose one of the available options, to advertise the program to members of the specified collection or to members of subcollections as well.

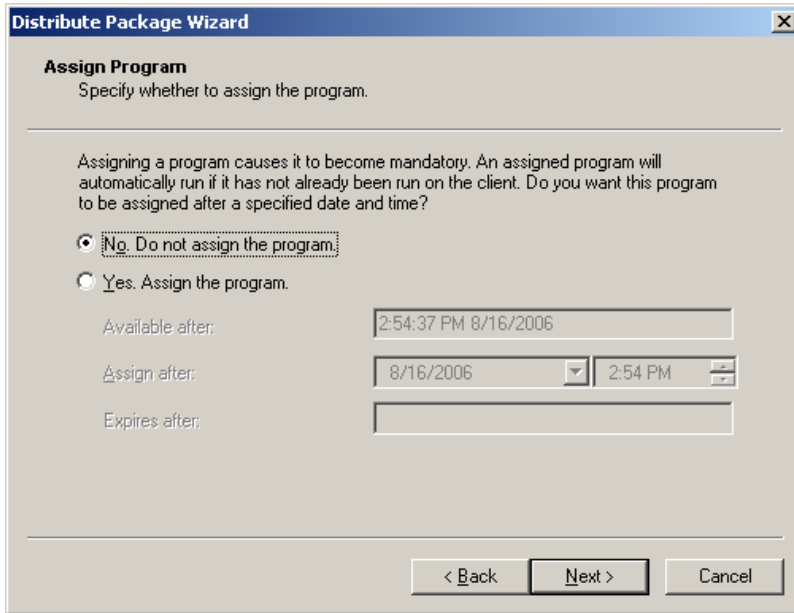
Click *Next*. The following screen appears:



9. In the date and time fields, set the date and time that the program will be advertised. By default, it is advertised on the day and time the package wizard was run.

Alternatively, choose the option to have the advertisement never expire.

Click *Next*. The following screen appears:



10. Assigning the program will automatically run on the client for the first time. When a program has already been run on the client machine, program assigning will be ignored but the advertisement will still take effect.

Click *Next*. The final screen of the wizard appears.

Click *Finish* to close the wizard.