

Faronics

ANTI-EXECUTABLE™

**ABSOLUTE Protection from
Unauthorized Executables**



Faronics Anti-Executable Enterprise Master Images and Rapid Deployment

TECHNICAL WHITEPAPER

Last modified: June 1, 2005

Faronics

Toll Free Tel: 800-943-6422
Toll Free Fax: 800-943-6488
International Tel: +1 604-637-3333
International Fax: +1 604-637-8188

www.faronics.com

©1999-2006 Faronics Corporation. All rights reserved.
Deep Freeze, Anti-Executable, and WINSelect are trademarks
and/or registered trademarks of Faronics Corporation.
All other company and product names are trademarks of their respective owners.

Introduction

Imaging workstations has become one of the quickest ways to deploy standard workstation software to multiple workstations. This white paper offers best practice guidelines regarding deployment of freshly imaged workstations and rapid deployment of Faronics Anti-Executable Enterprise over the network.

Silent Install System

Faronics Anti-Executable Enterprise can be deployed over a network using the Silent Install System.

Any deployment utility that allows execution of a command line on a remote workstation can implement the Silent Install System.

The command line has the following options:

Syntax	Description
[/Install]	Install Anti-Executable using installation file
[/Uninstall]	Uninstall Anti-Executable
[/Uninstall /Seed]	Uninstall Anti-Executable and leave the workstation seed installed

Example Command Line: `AEWksinstall.exe /Install`

In the above example, the Anti-Executable installation program file is named *AEWksinstall.exe*. This command line will install Anti-Executable with the configuration settings as defined in the Configuration Administrator.

The Silent Install System does not work without the [/Install] or [/Uninstall] switch.

Anti-Executable must be deactivated before [/Uninstall] can be used.

Creating a Master Image with a Full Anti-Executable Workstation Install

Faronics Anti-Executable Enterprise has been designed to work with all major imaging and desktop management software. The Silent Install System can be used to install Faronics Anti-Executable Enterprise on a master image.

Faronics Anti-Executable must be turned OFF before finalizing a master image.

1. Install all the software that is to be included in the master image. Faronics Anti-Executable must be the last application to be installed.
2. After installing Faronics Anti-Executable, the workstation restarts into a protected state, with Anti-Executable protection activated. Press CTRL + ALT + SHIFT + F10 to bring up Faronics Anti-Executable's login dialog, as shown below:



3. Enter the administrator password and click *OK*. The *General* tab in the Configuration screen appears.
4. Click the *OFF* radio button to deactivate Anti-Executable protection. Click *Apply*.

When deploying this Master Image to one or many workstations, set Faronics Anti-Executable protection to ON after following steps 2 and 3 described before.

Creating a Master Image with the Faronics Anti-Executable Seed Installed

An alternative to creating a Master Image with a full Faronics Anti-Executable installation is using the Anti-Executable Workstation Seed. The Workstation Seed is used to Target Install Anti-Executable from the Enterprise Console.

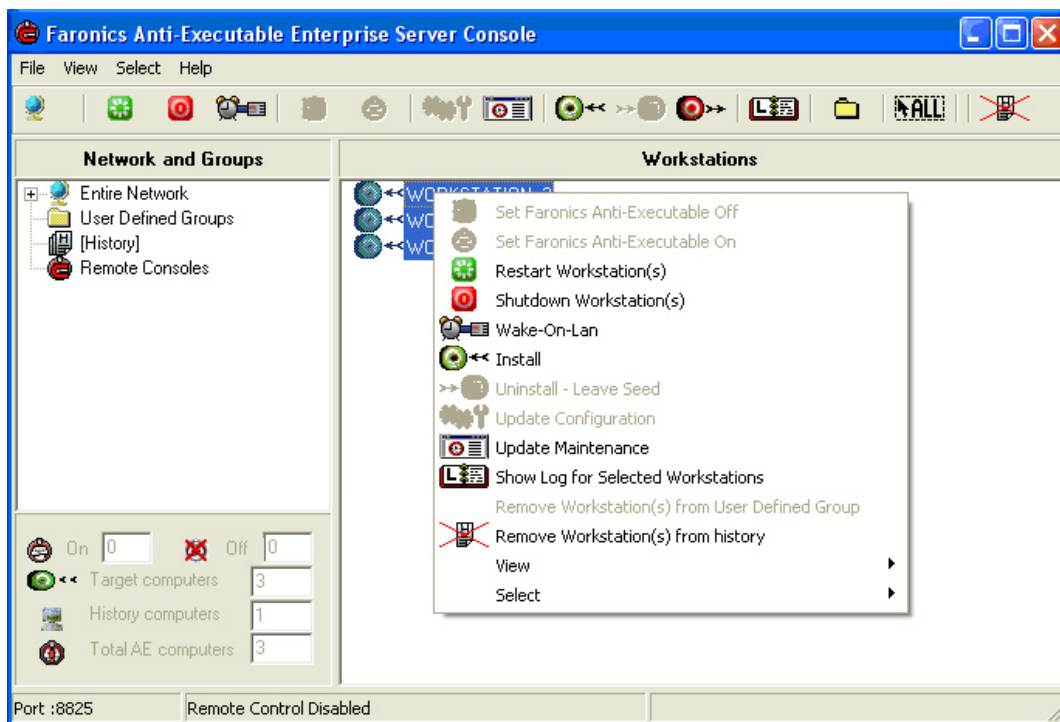
The advantage of using this method is that no extra steps have to be taken. Create the Master Image and install the Workstation Seed just before finalizing the image. No additional reboots are necessary. Use the Enterprise Console to perform target installations of Anti-Executable on the workstations.

Target Install Using Faronics Anti-Executable Enterprise

The Enterprise Console can remotely install a Full Workstation Installation on any workstation that has the Workstation Seed installed.

To install Faronics Anti-Executable on a workstation using the Enterprise Console, complete the following steps:

1. In the Console window shown below, right-click on the workstation(s) where Faronics Anti-Executable will be deployed to, and select *Install*. Select individual or multiple workstations.



2. A dialog box appears asking if the installation should proceed. Click *OK*.
3. A dialog box to select the installation file to install on the remote workstation displays.

The installation file had to be previously created using the Configuration Administrator. How to create and configure the Workstation installation file is beyond the scope of this white paper. For more information, please consult the User Guide.

4. After selecting the installation program to use (default name is *AEWksInstall.exe*), the workstation installs Faronics Anti-Executable and restarts. Once the installation is complete, the workstation icon in the Faronics Anti-Executable Enterprise Console changes to a Guard icon.