

FARONICS

ANTI-EXECUTABLE™

**ABSOLUTE Protection from
Unauthorized Executables**



**Faronics Anti-Executable Enterprise
Panda BusinessSecure Antivirus**

TECHNICAL WHITEPAPER

Last modified: June 1, 2005

Faronics

Toll Free Tel: 800-943-6422

Toll Free Fax: 800-943-6488

International Tel: +1 604-637-3333

International Fax: +1 604-637-8188

www.faronics.com

©1999-2006 Faronics Corporation. All rights reserved.
Deep Freeze, Anti-Executable, and WINSelect are trademarks
and/or registered trademarks of Faronics Corporation.
All other company and product names are trademarks of their respective owners.

Introduction

The process of updating virus definitions on workstations protected by Faronics Anti-Executable Enterprise involves three fundamental steps:

1. Deactivating Anti-Executable.
2. Updating the virus definitions.
3. Reactivating Anti-Executable.

This white paper provides technical information on how to approach these steps with Panda's Antivirus Corporate edition.



Faronics Anti-Executable is not marketed as an antivirus product. However, Anti-Executable will protect workstations from any executable form virus. Many viruses come in an executable form, with Anti-Executable installed and activated, these viruses are never run therefore never become active.

Deactivating Anti-Executable

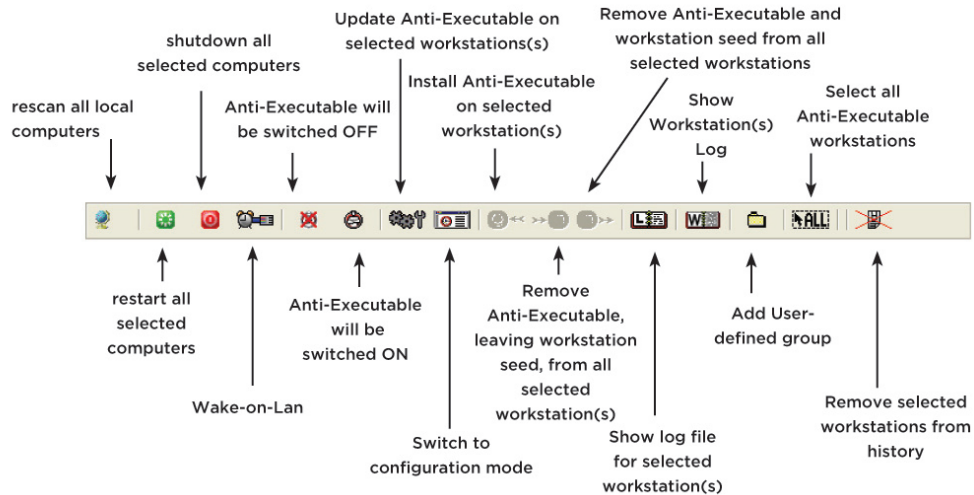
Faronics Anti-Executable protection must be deactivated before updating antivirus definitions. These definitions could include scan engine updates, so Faronics Anti-Executable must be deactivated in order for those updates to be reflected in the whitelist.


There are basically three ways to remotely deactivate Anti-Executable:

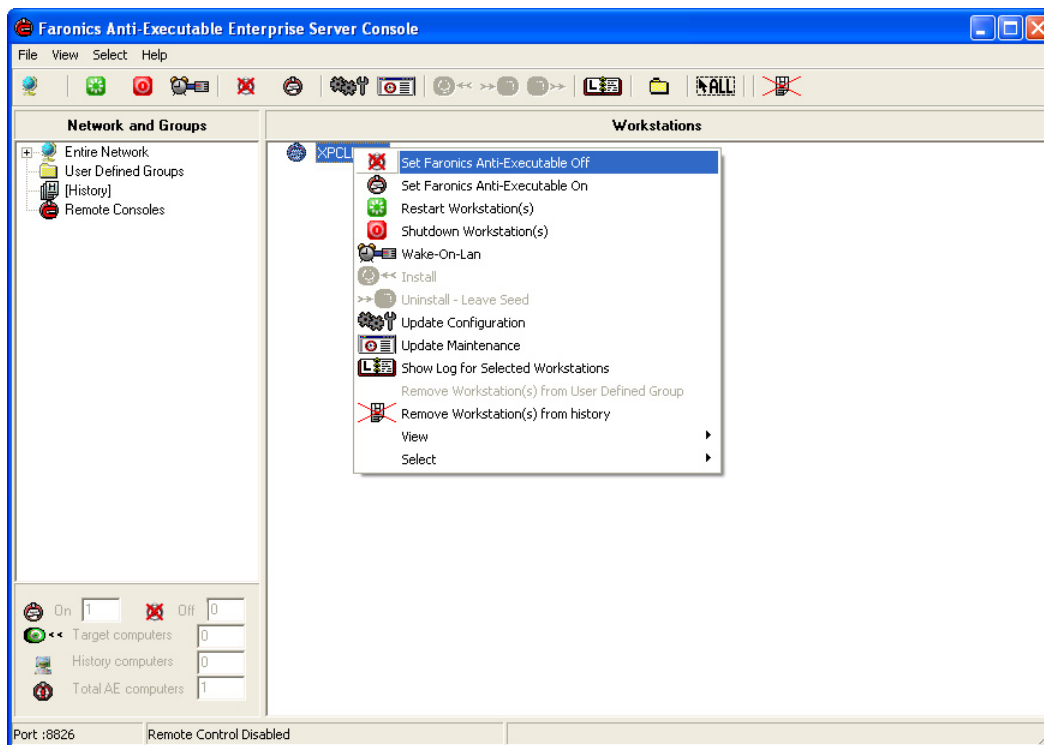
- By manually using the Anti-Executable Enterprise Console
- By setting up a Scheduled Maintenance Period
- By using the Command Line Control

Manually Using the Anti-Executable Enterprise Console

The Enterprise Console contains a toolbar at the top of the screen that allows quick access to the functions of the Console.



To deactivate Anti-Executable, select the workstation and click the Anti-Executable Off icon . Or, right-click on the workstation and select *Set Faronics Anti-Executable Off* in the contextual menu.



Click *OK* in the confirmation window.

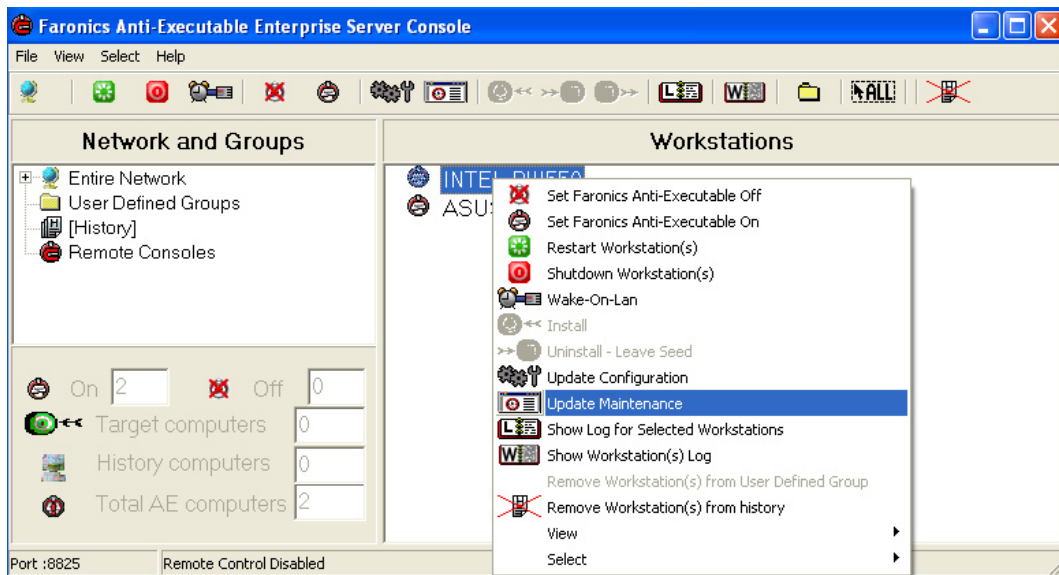
The selected workstations restart in the *Thawed* state.

Setting up a Scheduled Maintenance Period

There are two ways to set up a Scheduled Maintenance Period. The first is to set it up when configuring the Faronics Anti-Executable Enterprise installation files with the Configuration Administrator (best method for new deployments). The second way is to create or update the Maintenance Period using the Enterprise Console.

The following instructions elaborate on how to create/update the Maintenance Period with the Enterprise Console, assuming Anti-Executable is already deployed throughout the network.

1. Open the Enterprise Console and right-click on any workstation.
Select *Update Maintenance Period*.

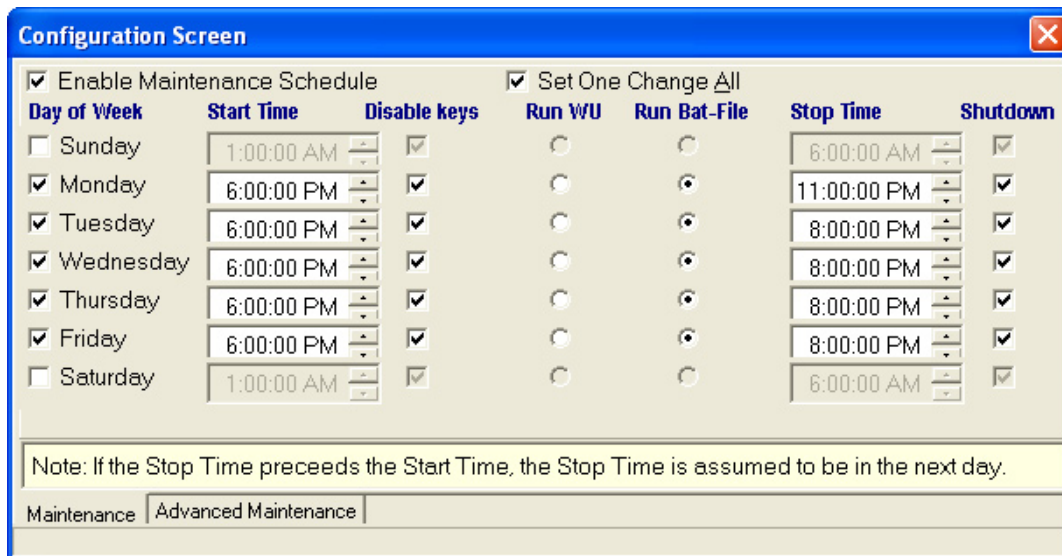


A red bar appears at the bottom of the screen.



2. Click *New*.

The Configuration screen appears, as shown. It only contains the *Maintenance* and *Advanced Maintenance* options.



3. Click on the *Maintenance* tab and place a check in the *Enable Maintenance Schedule* check box. Also place a check beside each day you want the Maintenance Schedule to run.
4. Set the Maintenance start time for each day in the *Start Time* column and the end time in the *Stop Time* column.
5. It is recommended that the *Disable keys* option is checked so the keyboard and mouse are disabled while the workstations are in Maintenance Mode.

Optional: check the *Shutdown* box so Anti-Executable shuts the workstations down at the end of the Maintenance Period.

6. Close the *Configuration* screen. A pop-up message appears requesting the administrator to select the workstations to send the new configuration to.

Select the workstations to be updated and click *Send*. This action updates all the selected workstations' configuration on the fly.

Controlling Anti-Executable through the Command Line Control - AEC

The Anti-Executable *Command Line Control (AEC)* offers network administrators increased flexibility in managing workstation protected by Faronics Anti-Executable. AEC works in combination with third party enterprise management tools and/or central management solutions. This combination allows administrators to update workstations on the fly and on demand.

It is important to note that AEC is not a stand-alone application. AEC integrates seamlessly with any solution that can run script files, including standard run-once login scripts.

The AEC executable is installed in same directory as the Configuration Administrator:

C:\Program Files\Faronics\Faronics Anti-Executable Enterprise\AEC.exe

AEC commands require a password with command line rights. One Time Passwords (OTPs) cannot be used.

AEC Options

| Syntax | Description |
|---------------------------------|---|
| AEC password ON | Turn Anti-Executable on |
| AEC password LOW | Set Anti-Executable security to Low* |
| AEC password HIGH | Set Anti-Executable security to High |
| AEC password OFF | Turn Anti-Executable off |
| AEC password CFG=[path] cfg.fzx | Replaces Anti-Executable configuration information. Works when Anti-Executable is On or Off.* |
| AEC ISON | Queries workstation if Anti-Executable is On. Returns 0 if Off. Returns 1 if on. |

* The *Low* security level is not available on Win 9x/Me machines

Example Batch File

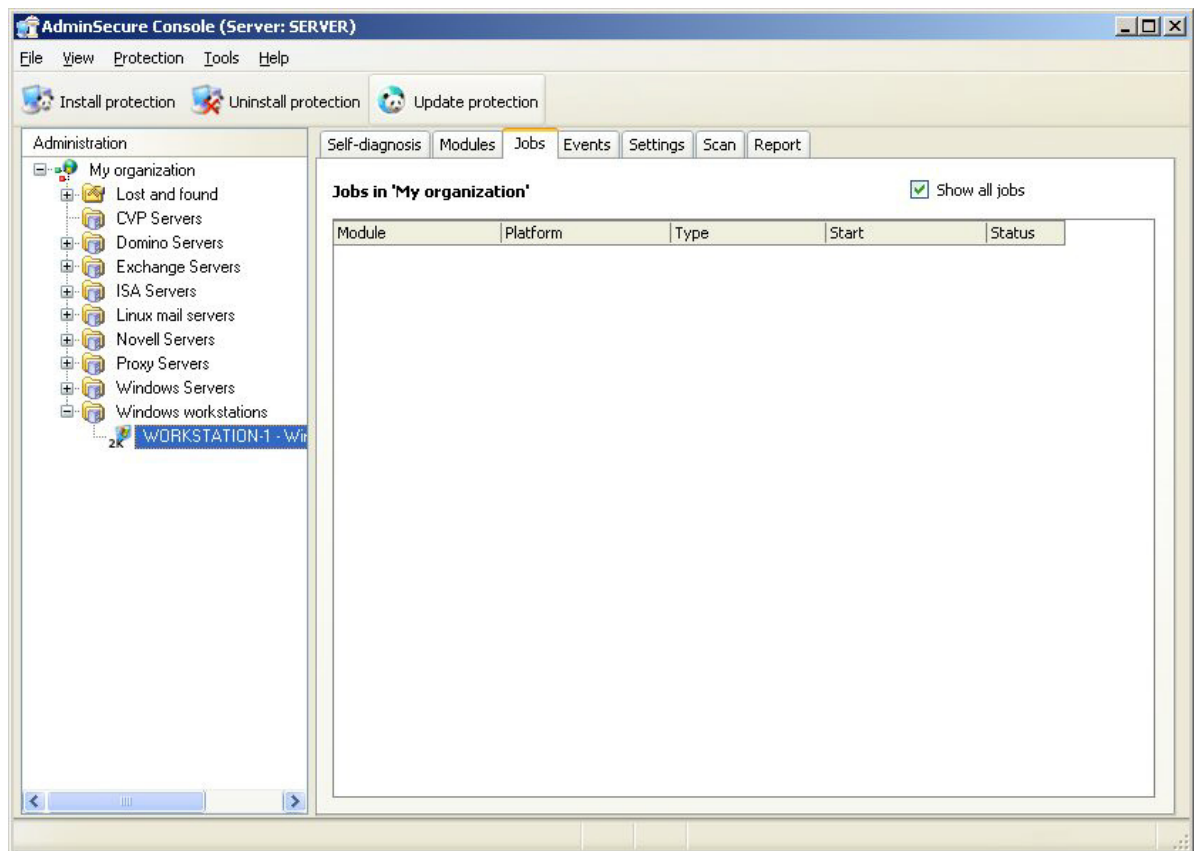
Below is a sample batch file that can be modified for use with any antivirus software that supports updating through a command line.

```
@ECHO OFF
\\SERVER\SHARE\FOLDER\AEC.EXE ISON
IF ERRORLEVEL 1 GOTO PROTECTED
IF ERRORLEVEL 0 GOTO UNPROTECTED
ECHO Errors where encountered running the command line control on this
workstation.
:PROTECTED
\\SERVER\SHARE\FOLDER\AEC.EXE password OFF
GOTO END
:UNPROTECTED
REM *****
REM * Insert the command to update the antivirus software here. *
REM *****
\\SERVER\SHARE\FOLDER\AEC.EXE password ON
GOTO END
:END
```

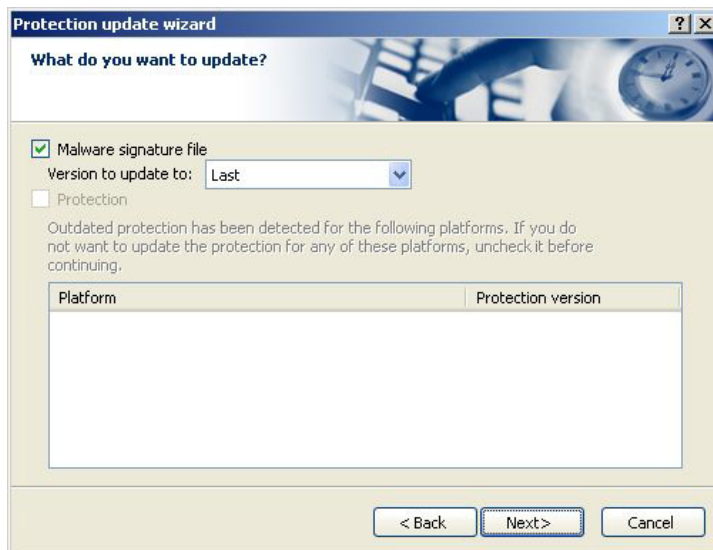
Updating the Virus Signature File

This document provides technical information on how to approach Virus Signature File updates for the Panda BusinessSecure Antivirus.

1. Using the Enterprise Console, deactivate Anti-Executable on the workstations.
2. When Anti-Executable is deactivated, open the *Panda AdminSecure Console* on your antivirus server.
3. Expand the Windows Workstations by clicking on the plus (+) sign, and select the Workstations you want to update.
4. Click on the *Update Protection* button located at the top of the screen



The *Protection Update Wizard* appears.



5. Click *Next*. The following screen asks what Virus Signature File you want to use to update the workstations.
By default this option is set to *Last*.
6. Click *Next*. Then click *Finish* on the next screen.
7. The new job is created (to verify job, click on *Jobs* tab) and the updating process begins.