

FARONICS

**ANTI-EXECUTABLE™**

ABSOLUTE Protection from  
Unauthorized Executables



## **Performing Windows Updates with Faronics Anti-Executable Enterprise and Deep Freeze Enterprise**

---

TECHNICAL WHITEPAPER

Last modified: June 1, 2005

### **Faronics**

Toll Free Tel: 800-943-6422  
Toll Free Fax: 800-943-6488  
International Tel: +1 604-637-3333  
International Fax: +1 604-637-8188

**[www.faronics.com](http://www.faronics.com)**

©1999-2006 Faronics Corporation. All rights reserved.  
Deep Freeze, Anti-Executable, and WINSelect are trademarks  
and/or registered trademarks of Faronics Corporation.  
All other company and product names are trademarks of their respective owners.

---

## Introduction

This white paper is intended to help Administrators or users who need to perform critical Windows Updates on workstations with both Deep Freeze and Faronics Anti-Executable installed. Because each system is designed differently, Deep Freeze and Anti Executable cannot see each other and each need specific settings to install the critical Windows Updates.

To accomplish this, a *Scheduled Maintenance period* must be defined for each program.

## Process Description

The basic process for the procedure is as follows:

1. To perform permanent data and configuration changes, the workstation(s) must be restarted into a Thawed state before reconfiguring the Anti-Executable Maintenance Schedule.
2. Create or update a configured Maintenance Schedule for Faronics Anti-Executable and deploy it to selected workstations.
3. Restart the workstation(s) into a Frozen state.
4. Create or update a configured Maintenance Schedule for Deep Freeze and deploy it to the same workstations.

The Maintenance Schedule for Deep Freeze must begin before and end after the Maintenance Schedule configured for Anti-Executable.

5. During the Maintenance window, the Deep Freeze Maintenance Schedule begins first. The workstations are booted Thawed.
6. The Faronics Anti-Executable Maintenance Schedule starts. Faronics Anti-Executable is deactivated and performs the Windows Updates, either via the Internet or an SUS (Microsoft Software Update Service) server.

A five hour minimum window is required for Windows Updates to ensure they are properly downloaded and installed.

Faronics Anti-Executable is reactivated, and the Faronics Anti-Executable Maintenance Schedule ends.

7. Deep Freeze then shuts down/restarts the workstations and the Deep Freeze Maintenance Schedule ends.

The next time the workstations are turned on, Deep Freeze boots into a Frozen state, and Anti-Executable is activated.

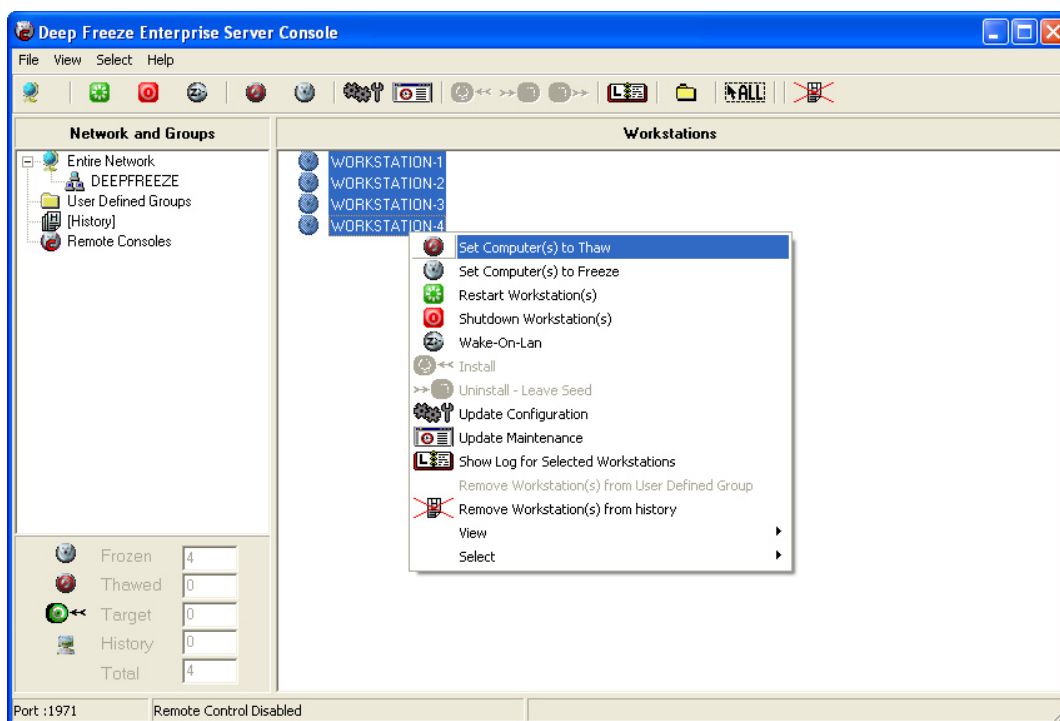
## Methodology

In order to download and install critical Windows Updates, and protect the workstation with both Deep Freeze and Faronics Anti-Executable, follow these instructions to create/update the Maintenance Schedule for each product in the Enterprise Consoles.

These instructions assume Faronics Anti-Executable and Deep Freeze are already deployed across the network.

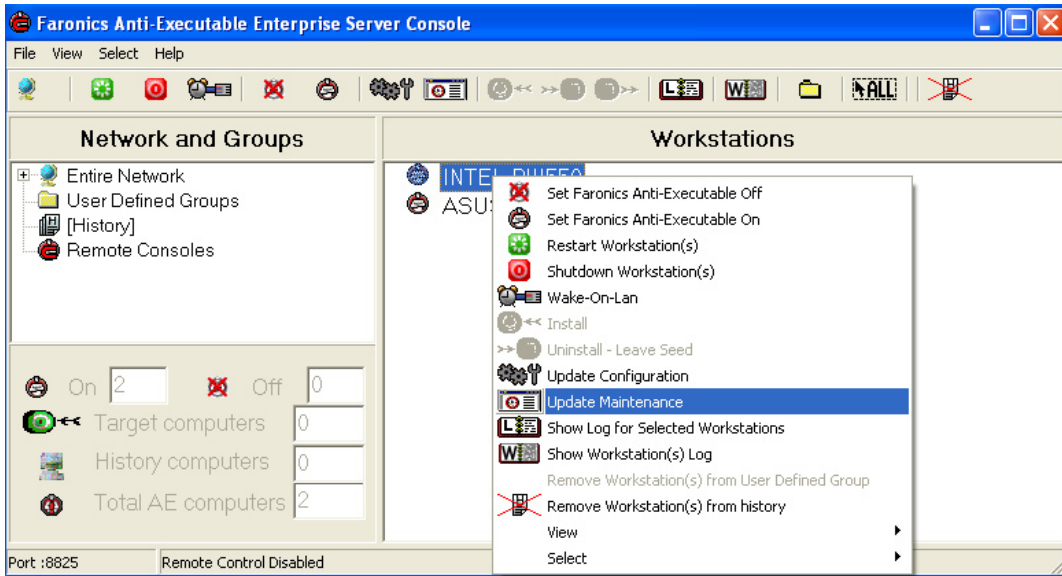
### Thawing Workstation(s)

1. Launch the *Deep Freeze Enterprise Console*.
2. Select the workstation(s) to be Thawed. Right-click and select *Set Computer(s) to Thaw*, as shown below.



## Updating the Faronics Anti-Executable Maintenance Schedule

1. Open the *Faronics Anti-Executable Enterprise Server Console*.
2. Right-click on the preferred workstation(s) and select *Update Maintenance*, as shown below.

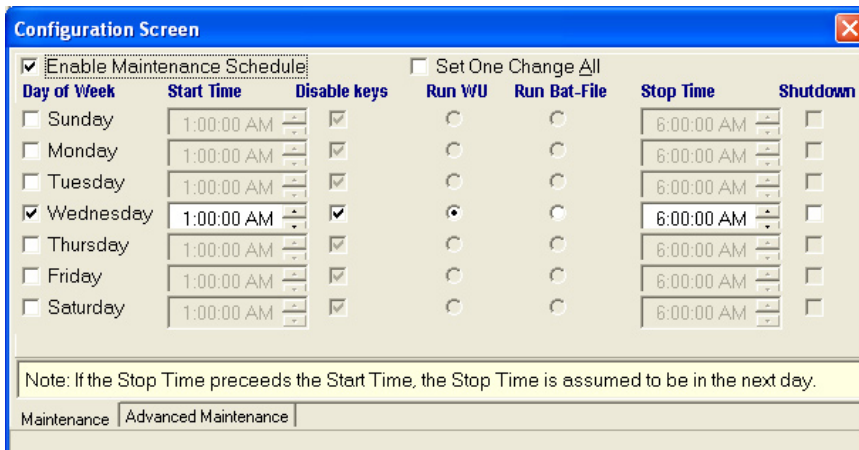


A red bar appears at the bottom of the screen.



3. Click *New*.

The *Configuration Screen* appears, as shown. It contains only the *Maintenance* and *Advanced Maintenance* options.



4. On the *Maintenance* tab, check the *Enable Maintenance Schedule* check box. Also place a check beside each day you want the Maintenance Schedule to run.

- Set the Maintenance start time for each day in the *Start Time* column and the end time in the *Stop Time* column.

In this example, we have set the Maintenance Window for five hours, the minimum amount of time recommended to perform critical Windows Updates.

- It is recommended that the *Disable keys* option is checked so the keyboard and mouse are disabled while the workstations are in Maintenance Mode.
- Select the *Run WU* option.

Note: Do not select the *Shutdown* option if the workstations are to be shut down after the Maintenance Period. Configure Deep Freeze to perform this function.

- Close the *Configuration Screen*. A dialog appears, requesting the administrator to select the workstations to send the new configuration to.
- Select the workstations to be updated and click *Send*. This action updates all the selected workstations' configuration on the fly.

## Freezing Workstation(s)

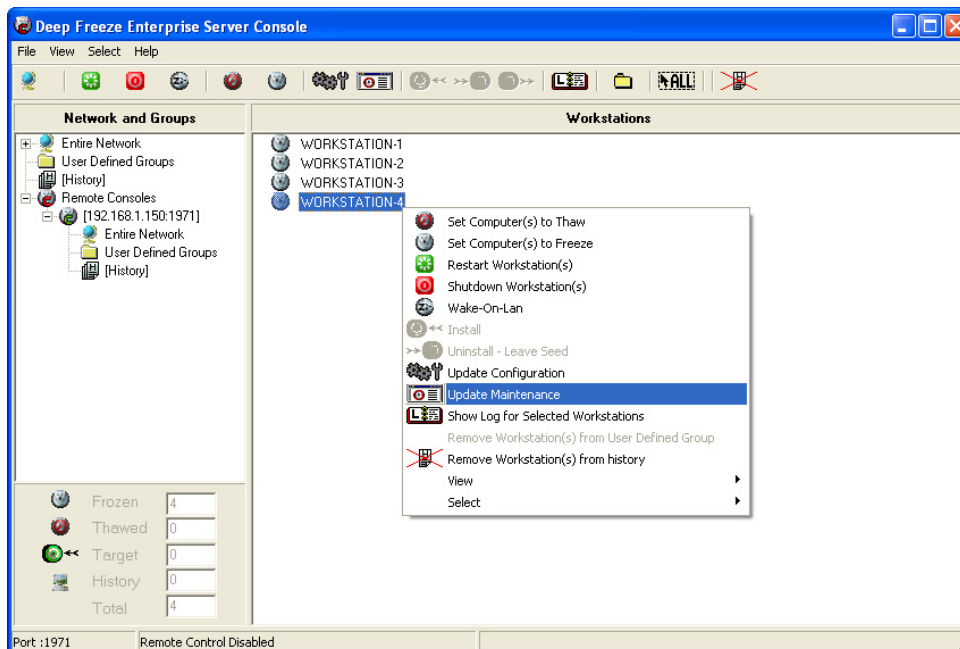
Now that the Faronics Anti-Executable maintenance schedule has been updated, the workstations must be restarted into a Frozen state.

- Launch the Deep Freeze Enterprise Console.
- Select the workstation(s) to be Frozen. Right-click and select *Set Computer(s) to Freeze*.

## Updating the Deep Freeze Maintenance Schedule

To update the Deep Freeze Maintenance schedule, complete the following steps:

- In the *Deep Freeze Enterprise Console*, Select the workstation(s) to be updated.
- Right-click and select *Update Maintenance*, as shown.

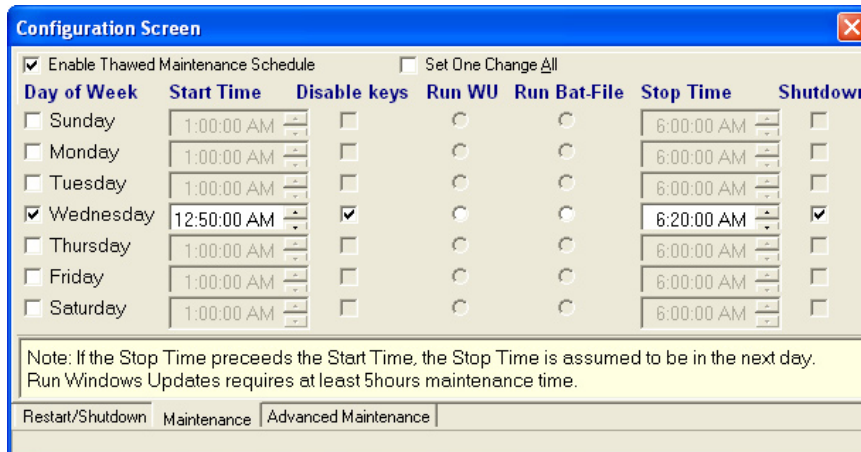


A red bar appears at the bottom of the screen, as shown:



3. Click *New*.

The *Configuration Screen* appears, as shown. It contains only the *Restart/Shutdown*, *Maintenance*, and *Advanced Maintenance* options.



4. Click on the *Maintenance* tab and check the *Enable Thawed Maintenance Schedule* check box. Also place a check beside each day the Maintenance Schedule will run.
5. Set the Maintenance start time for each day in the *Start Time* column, and the end time in the *Stop Time* column.

The *Start Time* for Deep Freeze’s Maintenance Schedule must begin 10 minutes before the one set for Faronics Anti-Executable. The *End Time* for Deep Freeze’s Maintenance Schedule must end 20 minutes after the one set for Faronics Anti-Executable.

NOTE: Do not select the *Run WU* option in Deep Freeze Enterprise, Faronics Anti-Executable will take care of the Windows Updates through its maintenance schedule.

6. It is recommended that the *Disable keys* option is checked so the keyboard and mouse are disabled while the workstations are in the Thawed state.

It is also important to check the *Shutdown* box so Deep Freeze shuts the workstations down at the end of the Maintenance Period. Otherwise the workstations are restarted in a Frozen state after the Maintenance period is complete.

7. Close the *Configuration Screen*.

A dialog appears, requesting the administrator to select the workstations to send the new configuration to.

8. Select the workstations to be updated and click *Send*. This action updates all the selected workstations’ configuration on the fly — meaning these workstations don’t have to be in the Thawed state for the configuration updates to take place.

Now the workstations have been updated with new Deep Freeze and Faronics Anti-Executable Maintenance Schedules. The workstations remain protected by both programs, and Windows Updates are performed during the Maintenance Window.